

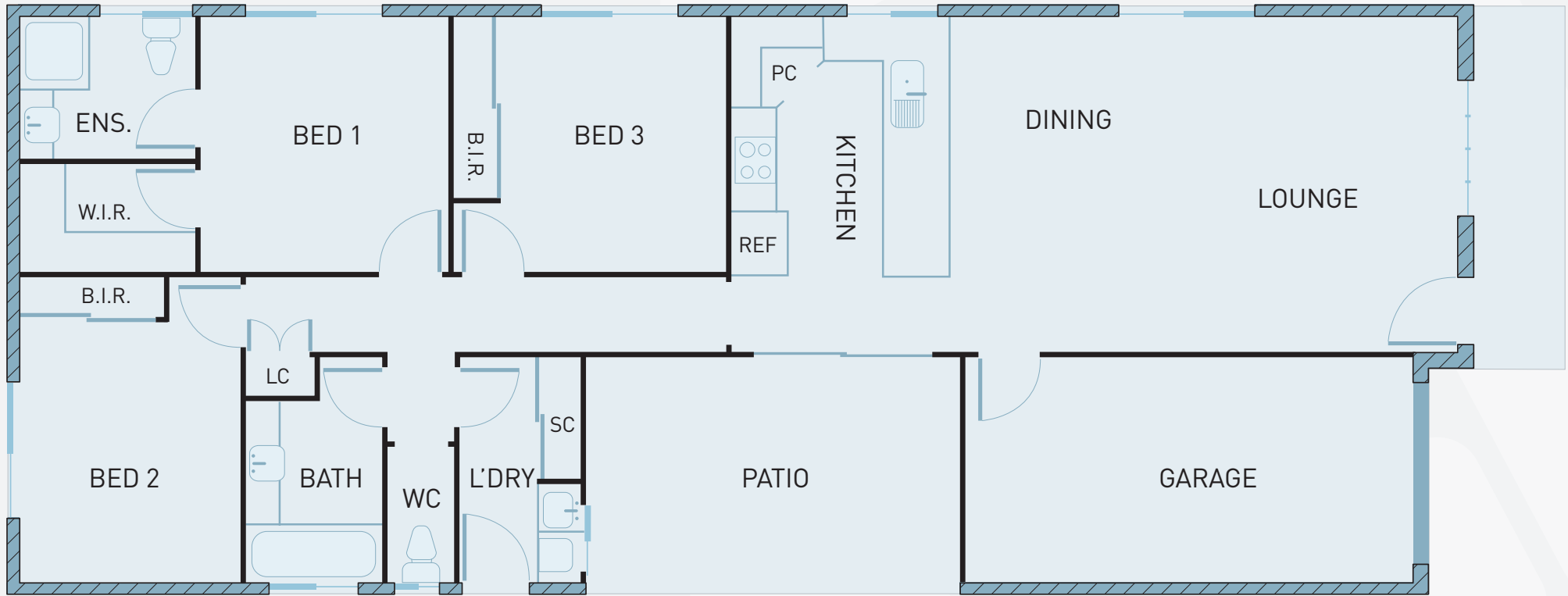
APOLLO DESIGN 03

Designed with privacy in mind, Apollo Design 3 features a spacious master suite and two additional bedrooms to the rear for that added peace and quiet.

With a mid section comprising a spacious, open plan kitchen, family and dining area leading through to a generous outdoor living space, Apollo Design 3 promotes cool breezes and lots of natural light.

With a total floor area of 155m² this design is ideal on a smaller property, but still manages to provide the owner with the feel of a larger home. Also worthy of note is the external block work which provides ideal insulation as well as protection against termites, cyclones and is more resistant to fire than timber.

This is a great investment property requiring minimum maintenance.



FOR UP TO DATE INFORMATION ON THIS DESIGN AND OTHERS, VISIT WWW.APOLLOCMS.COM.AU

HOUSE DETAILS



OVERALL DIMENSIONS

Area: 155m²
 Squares: 16 squares
 Lot: 12m wide

AREA DIMENSIONS

Living Area:	29.1m ²
Bedroom 1:	14.1m ²
Bedroom 2:	11.4m ²
Bedroom 3:	11.8m ²
Bathroom:	4.7m ²
Ensuite:	4.1m ²
Kitchen:	9.8m ²
Laundry:	4.5m ²
Toilet:	1.5m ²
Patio:	15.1m ²
Garage:	17.4m ²

DISCLAIMER: While every reasonable care has been taken in the preparation of this brochure and all particulars contained herein are believed to be correct at the time of printing, interested parties must rely upon their own inspections and inquiries. These inserts do not and will not form any part of the contract of sale. Illustrations and photography are for presentational purposes and should be used for indicative purposes only. Furniture not included.

