

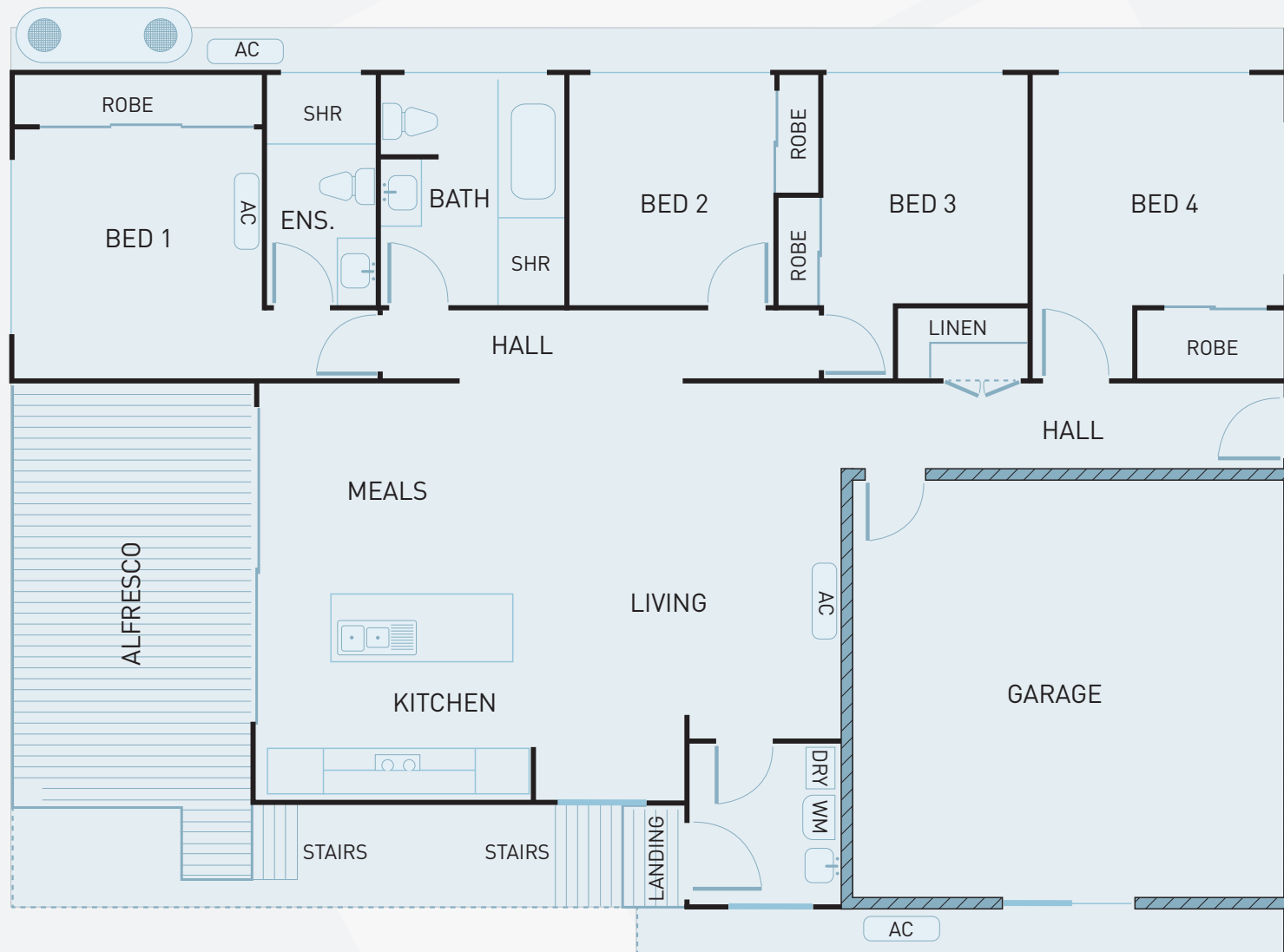
APOLLO DESIGN 01

Apollo design 1 is a true testament to balanced living; the 196m² home separates the living areas on one side and bedrooms on the other.

The size of this home is perfect for a small family, couple or even a bachelor/bachelorette, with clever use of space this home boasts a free flowing living area that eventuates into an open plan kitchen, where a pair of glass sliding doors separate the kitchen from the grand alfresco area.

All four bedrooms have built-in robes and the master has its own ensuite. The home is nicely finished with polished timber floors in the living and wet areas and carpet in the bedrooms. Another advantage of this home design is the foundations on which it is built. Raised off the ground by block piers or steel posts the cross flow ventilation keeps the home warm in winter and cool in summer.

This is a perfect investment property for those looking for a low maintenance home.



FOR UP TO DATE INFORMATION ON THIS DESIGN AND OTHERS, VISIT WWW.APOLLOCMS.COM.AU

HOUSE DETAILS



OVERALL DIMENSIONS

Area: 196m²
 Squares: 21 squares
 Lot: 22m wide

AREA DIMENSIONS

Bedroom 1: 13.5m ²	Living Area: 21.5m ²
Bedroom 2: 9.5m ²	Meals: 10.7m ²
Bedroom 3: 9.4m ²	Kitchen: 10.7m ²
Bedroom 4: 14m ²	Laundry: 4.4m ²
Bathroom: 7.5m ²	Alfresco: 20.1m ²
Ensuite: 4.4m ²	Garage: 33.2m ²

DISCLAIMER: While every reasonable care has been taken in the preparation of this brochure and all particulars contained herein are believed to be correct at the time of printing, interested parties must rely upon their own inspections and inquiries. These inserts do not and will not form any part of the contract of sale. Illustrations and photography are for presentational purposes and should be used for indicative purposes only. Furniture not included.

