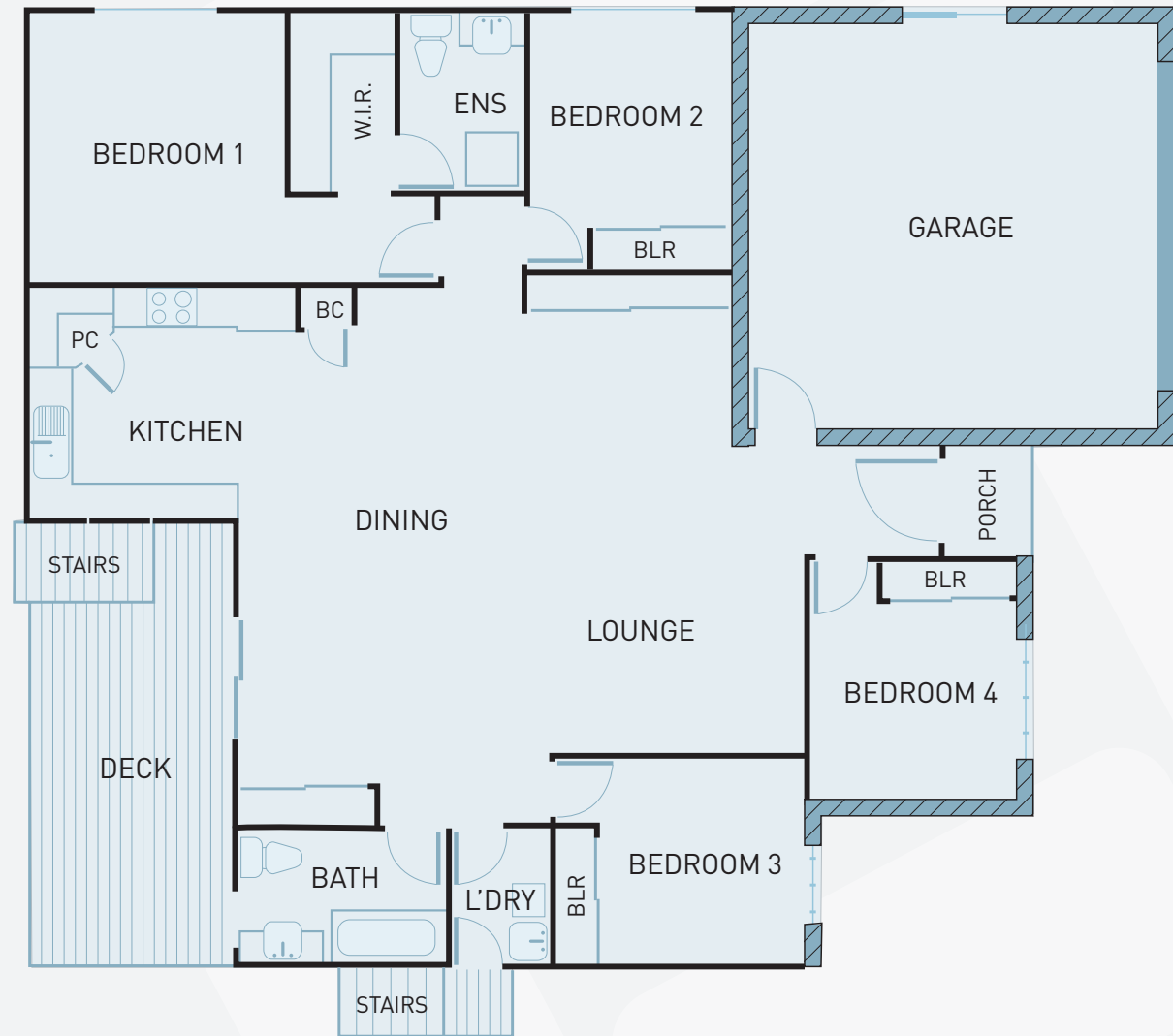


APOLLO DESIGN 02

Apollo Design 2 features a generous master suite with it's own walk-in robe and ensuite, plus three other ample sized bedrooms each with built-in robes.

The versatile plan feature centrally located family and dining areas with flow through access to the kitchen and generous outdoor living space. Polished timber floors cover the living areas and wet areas in this spacious 210m² home adding class and sophistication. The layout of this home makes it appear larger than it actually is. Raised up on piers (steel or block) this design takes advantage of crosswind ventilation allowing a comfortable environment regardless of weather conditions outside. Polished timber floors are not common in new homes in Central Qld which sets these homes apart from the rest. They are easily cleaned and maintained.

This is a perfect investment property for those looking for a low maintenance home.



FOR UP TO DATE INFORMATION ON THIS DESIGN AND OTHERS, VISIT WWW.APOLLOCMS.COM.AU

HOUSE DETAILS



OVERALL DIMENSIONS

Area: 210m²
Lot: 20m wide

AREA DIMENSIONS

Bedroom 1: 20.8m ²	Dining: 32.2m ²
Bedroom 2: 10.9m ²	Lounge: 23.5m ²
Bedroom 3: 10.6m ²	Kitchen: 13m ²
Bedroom 4: 10.5m ²	Laundry: 2.9m ²
Bathroom: 5.5m ²	Deck: 17.4m ²
Ensuite: 4.6m ²	Garage: 35.7m ²

DISCLAIMER: While every reasonable care has been taken in the preparation of this brochure and all particulars contained herein are believed to be correct at the time of printing, interested parties must rely upon their own inspections and inquiries. These inserts do not and will not form any part of the contract of sale. Illustrations and photography are for presentational purposes and should be used for indicative purposes only. Furniture not included.

